

注：产品外观及参数如有变化，恕不另行通知。
Note: Subject to change without notice.
MR-202211



HIGH QUALITY EQUIPMENT SERVICE PROVIDER 高品质印后设备服务商

唐山市爱德乐贸易有限公司

TANGSHAN EICHLER TRADING CO., LTD

地址：河北省唐山市玉田县虹桥工业园区 MATOUSHAN INDUSTRIAL PARK , NORTH OF YUTIAN
TOWN , NORTH OF YUTIAN COUNTY , TANGSHAN CITY , CHINA

EMAIL : salesbenleee@vip.163.com

eichler@vip.163.com

WEBISTE: www.cneichler.com

Tel ; 15097556527, 18632539399

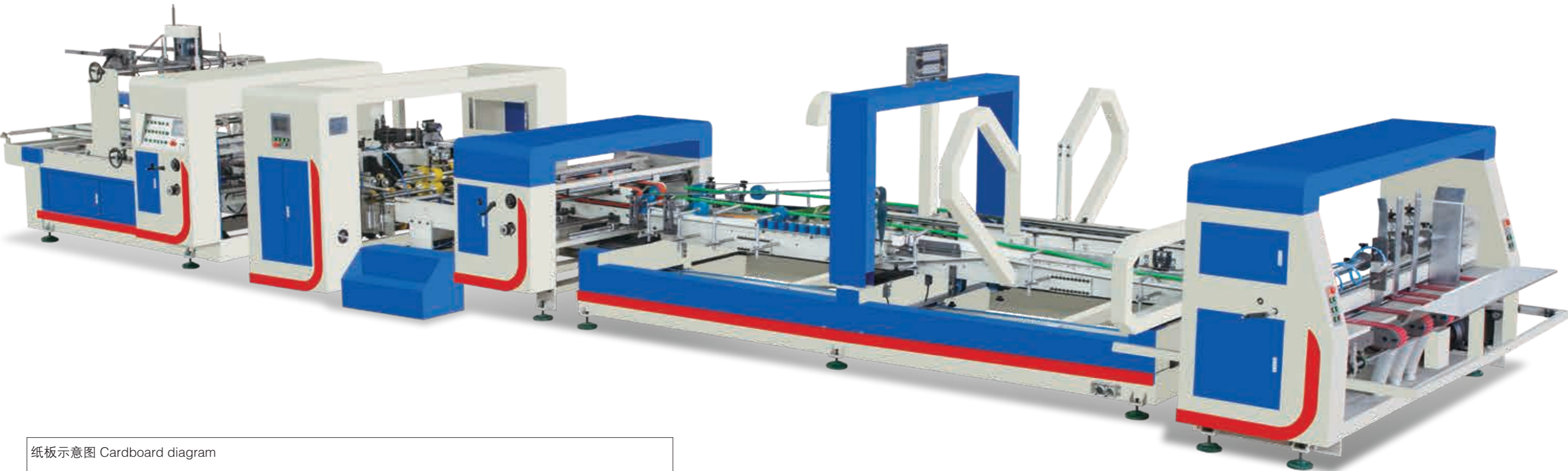
TANGSHAN EICHLER TRADING CO., LTD

KS-2600

全自动糊钉一体机

糊箱、钉箱一次完成，保证胶口密封性

MAX. 1200x2600mm
七层工业纸箱板

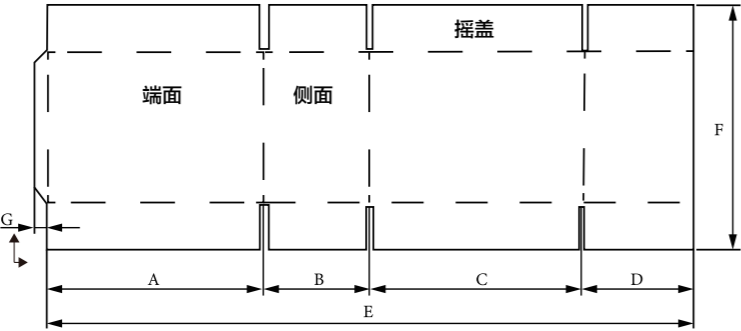


AUTOMATICFOR FOLDER GLUER
AND STITCHING MACHINE

全自动糊钉一体机，主要适用于平口瓦楞纸箱的糊箱及钉箱成型。钉箱部采用合金切刀
伺服控制钉头。速度高，耐用性强。最高钉速 1000 钉 / 分钟。

Automaticfor folder gluer and stitching machine, mainly used for flat corrugated box paste and nail
box forming. The nail box part adopts alloy cutter servo control of nail head. High speed and strong
durability. Maximum speed 1000 nails/min.

纸板示意图 Cardboard diagram



纸板要求 Cardboard requirements 单位 unit (mm)

型号	E 最大 Max.	E 最小 Min.	A=C 最大 Max.	A=C 最小 Min.	B=D 最大 Max.	B=D 最小 Min.	F 最大 Max.	F 最小 Min.	G 最大 Max.	E 最小 Min.
钉箱	2500	950	750	350	550	250	1200	450	30	25
糊箱	2550	750	1000	200	700	100	1200	300	30	25



局部说明
Partial description



A 型钉箱部 The stitching unit

A 型钉头，技术稳定，运行可靠，采用 1.9x0.75mm（18#扁丝）。打钉角度 45 度，钉箱可打单钉、双钉以及可变钉距。

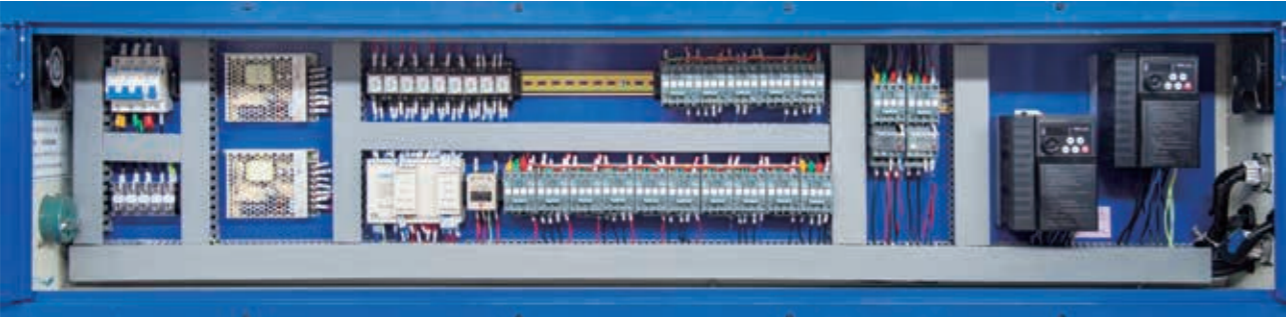
Type A nail head, with stable technology and reliable operation, adopts 1.9x0.75mm (18 # flat wire). The nailing angle is 45 degrees, and the nailing box can be used for single nail, double nail and variable nail pitch.



B 型钉箱部 The stitching unit

B 型钉头，技术稳定，运行可靠，采用 1.9x0.75mm（18#扁丝）。打钉角度 45 度，采用合金切刀，切丝稳定，速度更快，有效提高钉箱质量。

Type B nail head, with stable technology and reliable operation, adopts 1.9x0.75mm (18 # flat wire). The nailing angle is 45 degrees, and the alloy cutter is used. The cutting is stable and faster, effectively improving the quality of the nail box.



电器控制部 Electrical unit

本机变频器采用台湾士林变频器、PLC 控制系统等高端电器品牌，一键调机，提高工作效率。

The frequency converter of this machine adopts Taiwan Shilin frequency converter, PLC control system and other high-end electrical brands to adjust the machine with one key to improve the working efficiency.



纸板预压轮 Cardboard prepressing wheel

纸板压痕线预压结构，充分解决因纸张干燥等，导致的纸箱压线成型不好等问题。

The prepressing structure of the cardboard indentation line fully solves the problems such as poor molding of the carton indentation line caused by the drying of the paper.



成型辅助压线结构 Crimping structure

在纸张成型过程中，充分利用协轮组对纸箱成型进行二次压痕，保证成型美观，尺寸标准。

In the process of paper forming, make full use of the co wheel group to carry out secondary indentation on the carton forming to ensure that the forming is beautiful and the size is standard.



KS-2600

全自动糊钉一体机



技术参数
Specifications

型号	MODEL	KS-2600
最高钉箱速度	Max.nail box speed	1000 钉 / 分钟
钉距	Nail pitch	20-500mm
钉数	Number of nails	50-85 片 / 分钟
钉丝规格	Specification of nail wire	国标 17、18 号钉丝
整机功率	Totle power	≤ 15KW（变频调速）
适用纸张范围	Applicable paper range	A、B、C、AB 瓦楞纸板，三层、五层瓦楞纸板
机器净重	Machine weight	约 8 T
整机尺寸	Overall size	16000 × 4200 × 2100mm
打钉角度	Nailing angle	45°
气源标准	Air source standard	0.6-0.8Mpa(客户提供)
电源	Power Supply	三相五线制（3P 5W）380V ± 10% 50Hz(客户提供)



性能特点
Characteristics

1. 订单存储，3 人即可满足设备正常运行，实现简单快捷生产。
2. 先进的前缘吸风送纸、8 条吸风皮带，风量可单独控制，送纸稳定不偏斜。
3. 折叠部三轮预压，和 9 道压线轮，保证压线效果，侧撑 3 道支撑轮确保缝隙均匀，保证送纸不歪斜。
4. 气动挡板校正功能，杜绝剪刀口及错口的问题。
5. 最高钉速 1000 钉 / 分钟。
6. 日本电气工程师整机电路设计优化，程序稳定，动作合理。
7. 采用国内知名设计公司进行全新外观设计，外观更具立体层次感。

1. For order storage, three people can meet the normal operation of the equipment and realize simple and fast production.
2. Advanced leading edge suction and paper feeding, 8 suction belts, air volume can be controlled independently, and paper feeding is stable without deflection.
3. The folding part is pre pressed with three wheels and nine thread pressing wheels to ensure the effect of thread pressing. The side support with three supporting wheels ensures the uniform gap and ensures that the paper feeding is not skewed.
4. The correction function of the pneumatic baffle can eliminate the problems of scissors and staggered joints.
5. The maximum nail speed is 1000 nails/minute.
6. Japanese electrical engineers optimized the circuit design of the whole machine, with stable procedures and reasonable actions.
7. The famous domestic design company is adopted for the new appearance design, which makes the appearance more three-dimensional.