

爱德乐机械

Eichler **machine**



2008-2021

专注于**全自动贴窗机**研发

focuses on the
research and development of automatic window
pasting machine

唐山爱德乐贸易有限公司

TANGSHAN EICHLER TRADING CO.,LTD

地址：唐山市玉田县马头山工业园区

Add: Matoushan Industrial park , Yutian County ,
Tangshan City

电话/Tel : 15097556527

Email : eichler@vip.163.com

www.cneichler.com



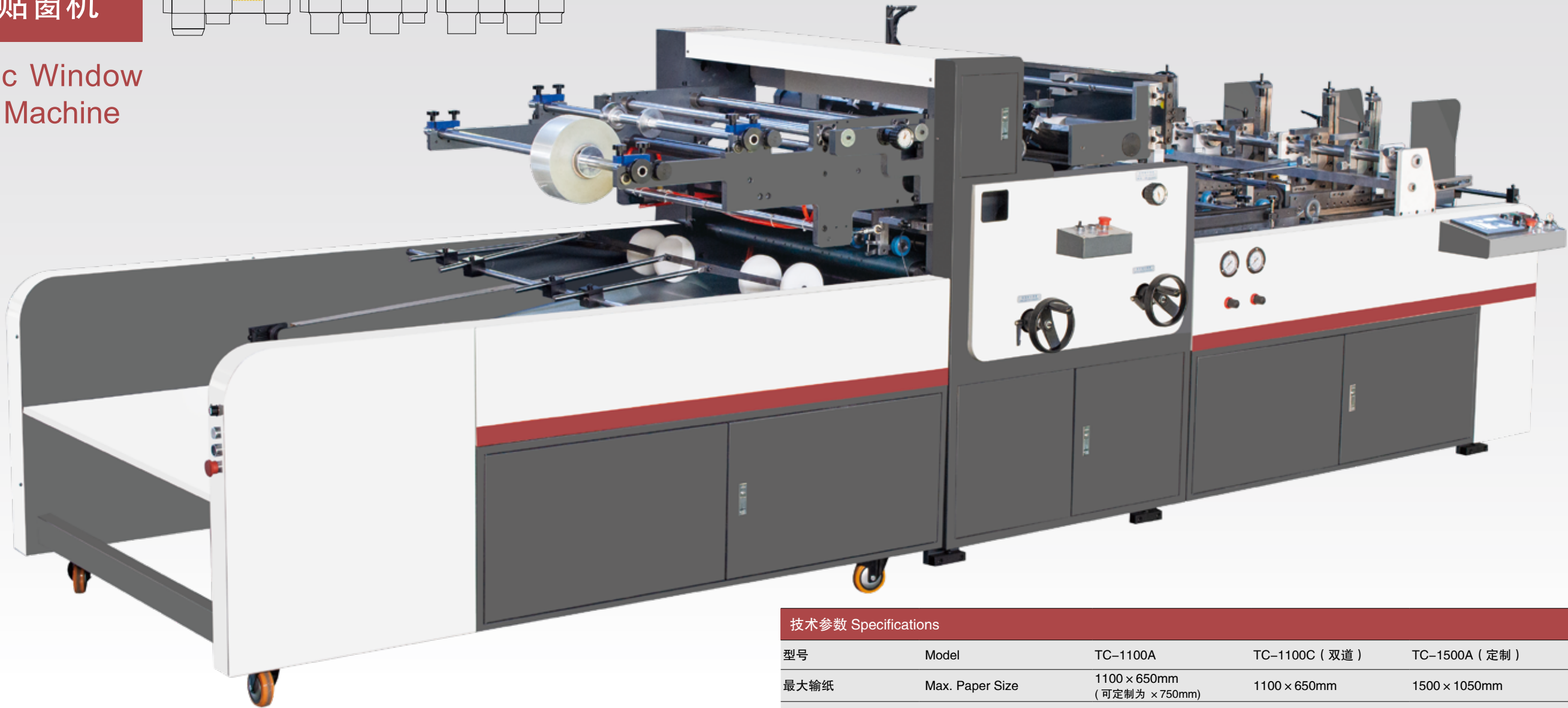
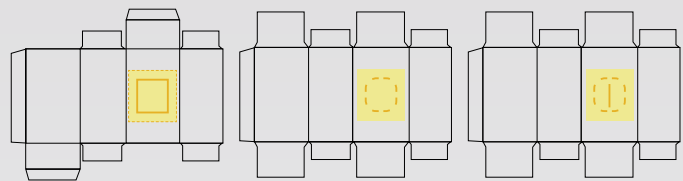
EICHLER

TC-1100A

全自动贴窗机

Automatic Window

Patching Machine



■ 技术特点

Technique characteristics

本机适用于对手机盒、酒盒、餐巾纸盒、服装盒、奶箱、贺卡等所有单面窗口的包装盒进行窗口贴膜，和各种纸板表面局部裱纸（贴加强纸），贴加强纸时可在加强纸的表面打孔，贴合后与纸板上的提手孔相对应，另外还具有对两面或三面窗口的包装盒进行贴膜，可对膜片进行压痕、打缺口，打孔。整机采用 PLC、人机界面、光电检测跟踪等集中控制，以实现对经过模切后的纸品、纸板在糊盒前进

This machine is suitable for packaging box, mobile phone box , napkin box, clothing box, milk box, cards all single window, and local mounting various paperboard paper (paper, paste paste strengthen) strengthen the paper on the surface of perforated paper, attached with a corresponding Kong Xiang cardboard., also has the packing box on both sides or three sides of the window film, film, play gap for indentation, punch.The machine adopts PLC, man-machine interface, photoelectric detection tracking control, in order to achieve after cutting the paper,

行自动进纸、输纸、窗口上胶或平面局部上胶、局部裱纸、膜片割口、纸膜打孔、贴膜、收纸多个工序的功能。给纸部采用伺服系统控制，寸动准确，实现高速进纸，确保高速稳定的工作状态和更高的运行精度。给膜部采用伺服系统控制，具有间歇动作功能，动作速度随主机变化而变化。

cardboard box in the paste before the automatic paper feeding, feeding, window sizing or plane local glue, laminating, local film cutting, perforating the film, foil, paper delivery of multiple processes function. Paper feeding part adopts the servo system control, inching accurately, realize high speed paper feeding, ensure high and stable working state and higher operation accuracy. To film the servo control system, with intermittent operation function, movement speed with the host changes.

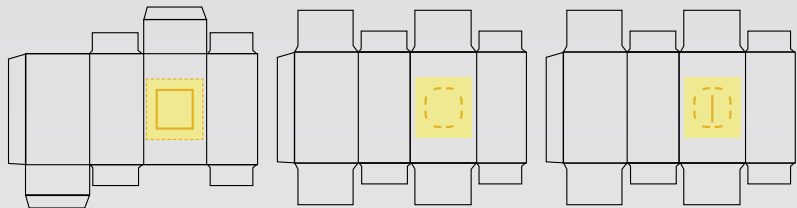
技术参数 Specifications				
型号	Model	TC-1100A	TC-1100C（双道）	TC-1500A（定制）
最大输纸	Max. Paper Size	1100 × 650mm (可定制为 × 750mm)	1100 × 650mm	1500 × 1050mm
最小输纸	Min. Paper Size	80 × 80mm	80 × 80mm	80 × 100mm
贴片最大尺寸	Max. film Size	850 × 500mm	850 × 500mm	1150 × 750mm
贴片最小尺寸	Min. film Size	30 × 20mm	30 × 20mm	30 × 20mm
膜片厚度	Film Sheet Thickness	0.03-0.5mm	0.03-0.5mm	0.03-0.5mm
最高机器速度	Max. Working Speed	11000s/h	20000s/h	7000s/h
适应卡纸	Cardboard	170-1200g/m²	170-1200g/m²	170-1200g/m²
适应瓦楞纸	Corrugated Paper	≤ 5mm	≤ 5mm	≤ 5mm
总功率	Total Power	9Kw	9Kw	11Kw
整机重量	Total Weight	3T	3T	3.7T
外形尺寸（长 × 宽 × 高）	Overall Dimensions	4998 × 1800 × 1520mm	4998 × 1800 × 1520mm	5800 × 2300 × 1600mm
外形尺寸（胶辊拉出时）	Overall Dimensions（When the roller is pulled out）	4998 × 2650 × 1520mm	4998 × 2650 × 1520mm	5800 × 3500 × 1600mm

TC-800A

全自动贴窗机

Automatic Window

Patching Machine



技术参数 Specifications		
型号	Model	TC-800A
最大输纸	Max. Paper Size	760 × 650mm
最小输纸	Min. Paper Size	80 × 80mm
贴片最大尺寸	Max. film Size	460 × 460mm
贴片最小尺寸	Min. film Size	30 × 20mm
膜片厚度	Film Sheet Thickness	0.03-0.5mm
最高机器速度	Max. Working Speed	12000s/h
适应卡纸	Cardboard	170-1200g/m²
适应瓦楞纸	Corrugated Paper	≤ 5mm
总功率	Total Power	8Kw
整机重量	Total Weight	2.7T
外形尺寸	Overall Dimensions	4800 × 1405 × 1520mm
外形尺寸 (胶辊拉出时)	Overall Dimensions (When the roller is pulled out)	4800 × 2100 × 1520mm

■ 技术特点 Technique characteristics

本机适用于对手机盒、酒盒、餐巾纸盒、服装盒、奶箱、贺卡等所有单面窗口的包装盒进行窗口贴膜，和各种纸板表面局部裱纸（贴加强纸），贴加强纸时可在加强纸的表面打孔，贴合后与纸板上的提手孔相对应，另外还具有对两面或三面窗口的包装盒进行贴膜，可对膜片进行压痕、打缺口，打孔。整机采用 PLC、人机界面、光电检测跟踪等集中控制，以实现经过模切后的纸品、纸板在糊盒前进

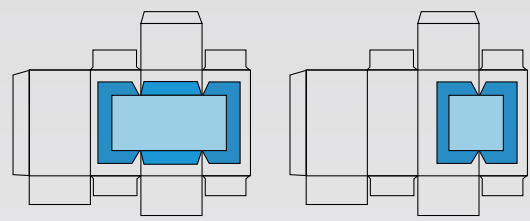
This machine is suitable for packaging box, mobile phone box , napkin box, clothing box, milk box, cards all single window, and local mounting various paperboard paper (paper, paste paste strengthen) strengthen the paper on the surface of perforated paper, attached with a corresponding Kong Xiang cardboard., also has the packing box on both sides or three sides of the window film, film, play gap for indentation, punch.The machine adopts PLC, man-machine interface, photoelectric detection tracking control, in order to achieve after cutting the paper,

行自动进纸、输纸、窗口上胶或平面局部上胶、局部裱纸、膜片割口、纸膜打孔、贴膜、收纸多个工序的功能。给纸部采用伺服系统控制，寸动准确，实现高速进纸，确保高速稳定的工作状态和更高的运行精度。给膜部采用伺服系统控制，具有间歇动作功能，动作速度随主机变化而变化。

cardboard box in the paste before the automatic paper feeding, feeding, window sizing or plane local glue, laminating, local film cutting, perforating the film, foil, paper delivery of multiple processes function. Paper feeding part adopts the servo system control, inching accurately, realize high speed paper feeding, ensure high and stable working state and higher operation accuracy. To film the servo control system, with intermittent operation function, movement speed with the host changes.

TC-1100Q
全自动压线切角
贴窗机

Automatic crimping
and cutting corner
window sticking
machine



■ 技术特点 Technique characteristics

本机适用于对手机盒、酒盒、餐巾纸盒、服装盒、奶箱、贺卡等所有单面窗口的包装盒进行窗口贴膜，和各种纸板表面局部裱纸（贴加强纸），贴加强纸时可在加强纸的表面打孔，贴合后与纸板上的提手孔相对应，另外还具有对两面或三面窗口的包装盒进行贴膜，可对膜片进行压痕、打缺口，打孔。整机采用 PLC、人机界面、光电检测跟踪等集中控制，以实现经过模切后的纸品、纸板在糊盒前进

行自动进纸、输纸、窗口上胶或平面局部上胶、局部裱纸、膜片割口、纸膜打孔、贴膜、收纸多个工序的功能。给纸部采用伺服系统控制，寸动准确，实现高速进纸，确保高速稳定的工作状态和更高的运行精度。给膜部采用伺服系统控制，具有间歇动作功能，动作速度随主机变化而变化。

cardboard box in the paste before the automatic paper feeding, feeding, window sizing or plane local glue, laminating, local film cutting, perforating the film, foil, paper delivery of multiple processes function. Paper feeding part adopts the servo system control, inching accurately, realize high speed paper feeding, ensure high and stable working state and higher operation accuracy. To film the servo control system, with intermittent operation function, movement speed with the host changes.

技术参数 Specifications					
型号	Model	TC-1100Q(切角压线)	TC-800Q (切角压线)	TC-1500Q(切角压线)	TC-1100G (高速)
最大输纸	Max. Paper Size	1100 × 650mm	760 × 650mm	1500 × 1050mm	1100 × 1100mm
最小输纸	Min. Paper Size	100 × 100mm	100 × 100mm	100 × 100mm	100 × 100mm
贴片最大尺寸	Max. film Size	850 × 500mm (压线 470 × 500mm)	460 × 460mm	1150 × 750mm (压线 750 × 750mm)	850 × 500mm
贴片最小尺寸	Min. film Size	40 × 30mm	40 × 30mm	40 × 40mm	40 × 40mm
膜片厚度	Film Sheet Thickness	0.03-0.5mm	0.03-0.5mm	0.03-0.5mm	0.03-0.3mm
最高机器速度	Max. Working Speed	10000s/h (压线 4500s/h)	12000s/h (压线 4500s/h)	7000s/h (压线 4000s/h)	20000s/h (双道 4000s/h)
适应卡纸	Cardboard	200-1200g/m²	200-1200g/m²	200-1200g/m²	200-1200g/m²
适应瓦楞纸	Corrugated Paper	≤ 5mm	≤ 5mm	≤ 5mm	≤ 5mm
总功率	Total Power	9Kw	9Kw	11Kw	10.5Kw
整机重量	Total Weight	3T	2.8T	3.7T	3.5T
外形尺寸	Overall Dimensions	4998 × 1800 × 1520mm	4800 × 1405 × 1520mm	5800 × 2300 × 1600mm	5800 × 2300 × 1520mm
外形尺寸(胶辊拉出时)	Overall Dimensions (When the roller is pulled out)	4998 × 2650 × 1520mm	4800 × 2100 × 1520mm	5800 × 3500 × 1600mm	5800 × 3500 × 1520mm

全自动贴窗机局部说明

Automatic Window Patching Machine Partial description



01 人机界面 Man-machine interface

本机采用7吋触摸显示屏与主机电脑 (PLC) 将膜长, 计数等实现数字化调整。
This machine uses a 7-inch touch screen display and a host computer (PLC) to digitally adjust the film length and count.



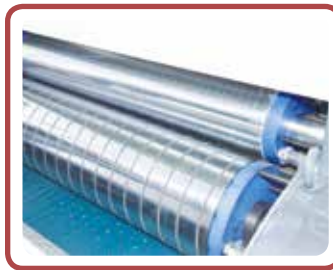
02 伺服给纸 Servo paper feed

给纸部采用1.5千瓦伺服电机驱动, 以确保给纸的高速稳定性。
The paper feeding unit is driven by a 1.5 kW servo motor to ensure high speed stability of the paper feed.



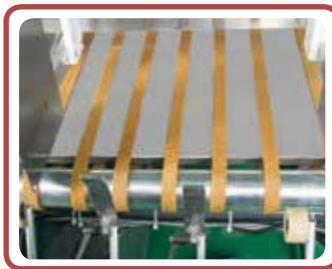
09 胶片前后调整 Film front and rear adjustment

通过谐波差速器对膜片前后位置进行不停机调整。
The front and rear positions of the diaphragm are adjusted without stopping by a harmonic differential.



10 切膜调整 Cut film adjustment

机器专利技术, 切膜时可实现超低噪音, 厚度0.5mm以下胶片方可切断。
The machine patented technology can achieve ultra-low noise when cutting the film, and the film can be cut only when the thickness is less than 0.5mm.



03 给纸皮带 Paper belt

给纸皮带采用纯进口马来西亚纯天然胶皮带, 具有高韧性高摩擦力, 告别普通给纸皮带送料时所出现皮带打滑问题。
The paper belt is made of pure imported Malaysian natural rubber belt, which has high toughness and high friction, and bids farewell to the problem of belt slippage when feeding the ordinary paper feeding belt.



04 推规定位 Pushing the position

采用国际最常见的推规定位以保证贴合精度。
The most common push position in the world is adopted to ensure the fitting accuracy.



11 滚刀切膜 Hob cutting film

切膜时采用双滚筒剪切斜刀方式切膜, 调刀位置支持上下同时调整, 调刀方便简单。
When cutting the film, the film is cut with a double-cylinder cutting oblique knife. The position of the knife can be adjusted up and down at the same time. The knife adjustment is convenient and simple.



12 膜片割口 Diaphragm cut mouth

采用凸轮结构, 对膜片需要开口的盒子 (如纸巾盒等) 进行间歇性割口。
The cam structure is used to intermittently cut a box (such as a tissue box) whose diaphragm needs to be opened.



05 纸张上胶 Paper gluing

根据产品尺寸可局部上胶, 清洗胶辊时可将胶辊直接全部抽出清洗, 简单快捷。
According to the size of the product, the glue can be applied locally. When cleaning the rubber roller, the rubber roller can be taken out and cleaned directly, which is simple and quick.



06 胶位左右调整 Adjust the glue position left and right

通过手钮旋转, 实现胶位左右的不停机调整。
Through the rotation of the hand button, the non-stop adjustment of the glue position is realized.



13 整卷架膜 Whole volume Membrane

将整卷膜片安装在膜架上, 并可以调整左右位置。
The entire roll of film is mounted on the membrane holder and the left and right positions can be adjusted.



14 给膜伺服 Film servo

采用750W知名品牌伺服电机搭配高精度减速机, 实现精准送膜, 使膜长精度保证在±0.1-0.5mm以内。
Adopting 750W famous brand servo motor with high precision reducer to achieve accurate film feeding, the film precision is guaranteed within ±0.1-0.5mm.



07 胶位前后调整 Gel position adjustment

通过谐波差速器, 对涂胶前后位置进行不停机调整。
Through the harmonic differential, the position before and after the glue is adjusted without stopping.



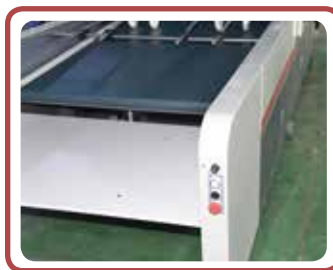
08 膜片左右调整 Diaphragm adjustment

通过手钮旋转将膜片左右位置实现不停机调整。
The left and right positions of the diaphragm can be adjusted without stopping by the knob of the hand button.



15 精度校准 Precision calibration

采用编码器与光电开关调整准确的给纸时间。
The encoder and photoelectric switch are used to adjust the accurate paper feed time.



16 收纸调整 Take-up adjustment

机器收纸时, 收纸平台可实现单独调速, 计数功能, 平台上下位置可升降调整。
When the machine receives paper, the paper receiving platform can realize independent speed regulation, counting function, and the upper and lower positions of the platform can be adjusted by lifting.