

## TWO PIECES FOLDER GLUER



|                       |   |
|-----------------------|---|
| <b>Model</b>          | <b>YS2900C</b>  |
| <b>Max paper size</b> | <b>1450*1300mm</b>                                    |
| <b>Min paper size</b> | <b>430*220mm</b>                                      |
| <b>Speed</b>          | <b>3600 pieces/hour ( depends on the people fold)</b> |
| <b>Power</b>          | <b>11kw</b>   |

**PRICE :**

**PAYMENT:** T/T( 30% PREPAID, BALANCE ALL THE PAYMENT BEFORE DELIVERY )

**NOTICE :** THE PRICE NOT INLCUDE THE COST OF ENGINEER

**QUOTATION DATE :**

**VALIDITY OF THE QUOTATION:** 30 DAYS

**DELIVERY TIME:** 30 DAYS AFTER THE DOWN PAYMENT ARRIVED .

**PACKAGE:** 40 FEET CONTAINER

**WARRANTY:** ONE YEAR

**MOQ :** ONE

**COUNTRY OF ORIGIN:** CHINA

**PORT OF LOADING :** TIANJIN PORT

**HS CODE :** 84413090

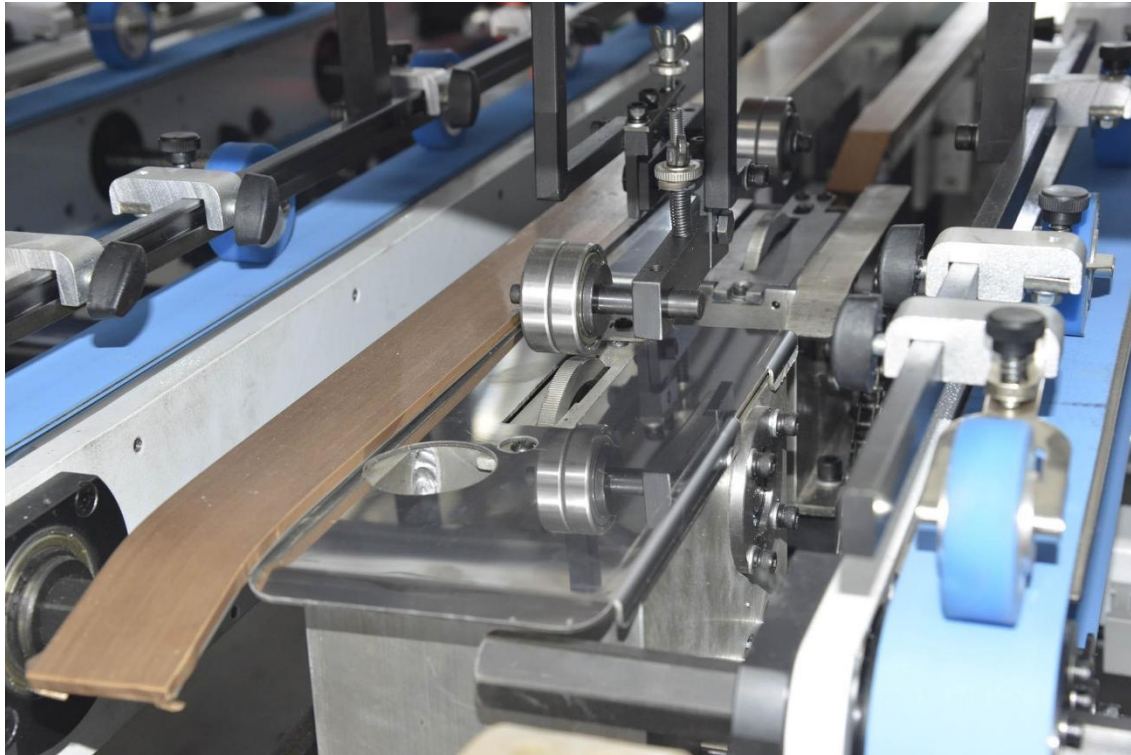
## **Partial description**

### **I. Feeding Unit**



**The paper feeding department adopts whirlpool wind pump to feed paper to increase the friction;  
the imported cowrie belt with high friction paper does not slip, good wear resistance,  
and the material does not change in winter and summer;  
the digital adjustment of paper feeding length is accurate and stable;  
the paper feeding belt wall plate combination adopts linear bearings with quenched chrome plated rods to adjust left and right, easy to move.**

## 2. Gluing Section



**The gluing department adopts hot melt glue + sealing glue double coating method,**

**hot melt glue is quickly fixed and does not go out of position, sealing glue adhesion reinforcement,**

**to ensure that the paper in the high temperature and cold environment can be permanently sticky;**

**hot melt glue box is made of cast aluminum alloy die-casting, heating and heat transfer speed;**

**cold glue box adopts stainless steel glue box corrosion resistance;**

**cold and hot glue wheel and with the assembly parts are made of stainless steel.**



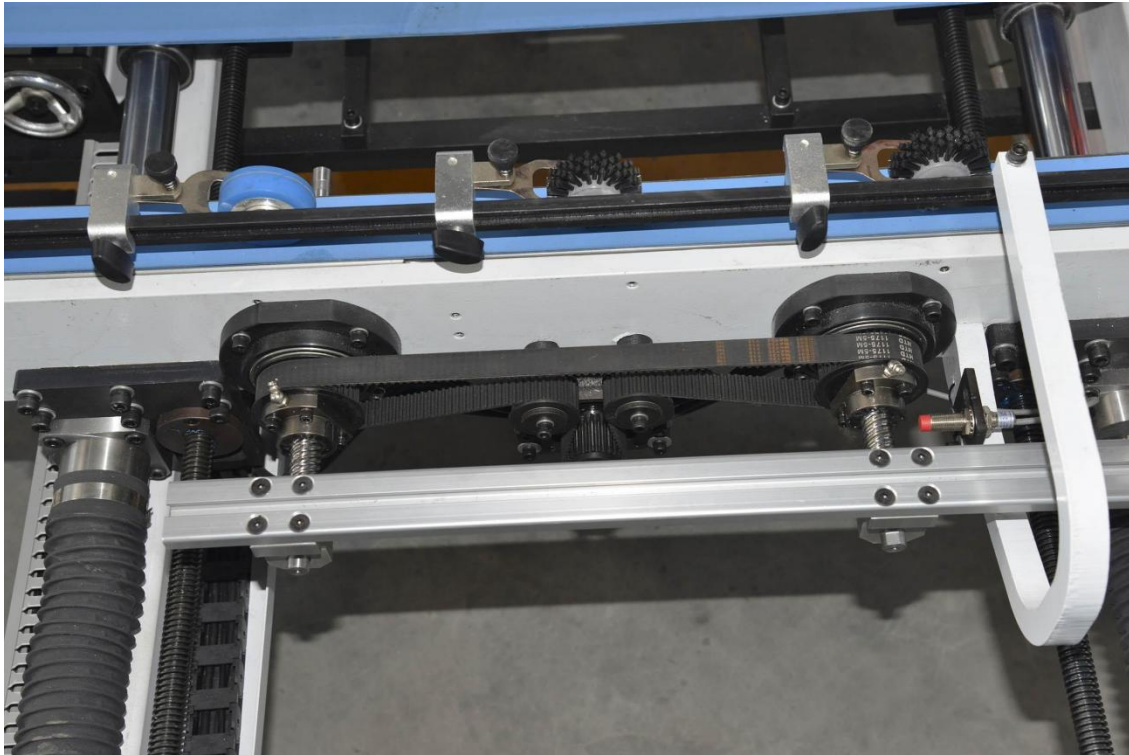
### 3, Main machine paper delivery unit



**The paper feeding section of the main machine adopts four paper belt wall plates that can be adjusted to move;  
the paper pressing device adopts a combination of pressure-adjustable insulating rubber wheels to receive and feed paper,  
and the shaped paper can be moved back and forth according to its shape to ensure synchronous and stable paper receiving and paper feeding without slipping;  
the single sheet in place etc. paper anti-scratch paper stopping electric control function can avoid the single sheet in place etc.  
paper abrasion phenomenon caused by the paper going successively / length difference between the two sheets.**

#### **4, Main Side push paper positioning section**

---



**Side pushing paper positioning department on both sides of the patting paper using two sets of servo system drive four sets of precision ball screw side pushing positioning,**

**according to the paper edge pressure strength to adjust the side pushing movement cycle time fast and slow,  
to ensure that the paper gluing alignment accurate, stable, not to hurt the paper edge**

## 5, Digital Smart Side Gauge Adjustment



Electric adjustment saves time and effort,  
digital intelligent adjustment of side push A gauge and B  
gauge position,  
digital adjustment for single change is efficient and  
convenient.

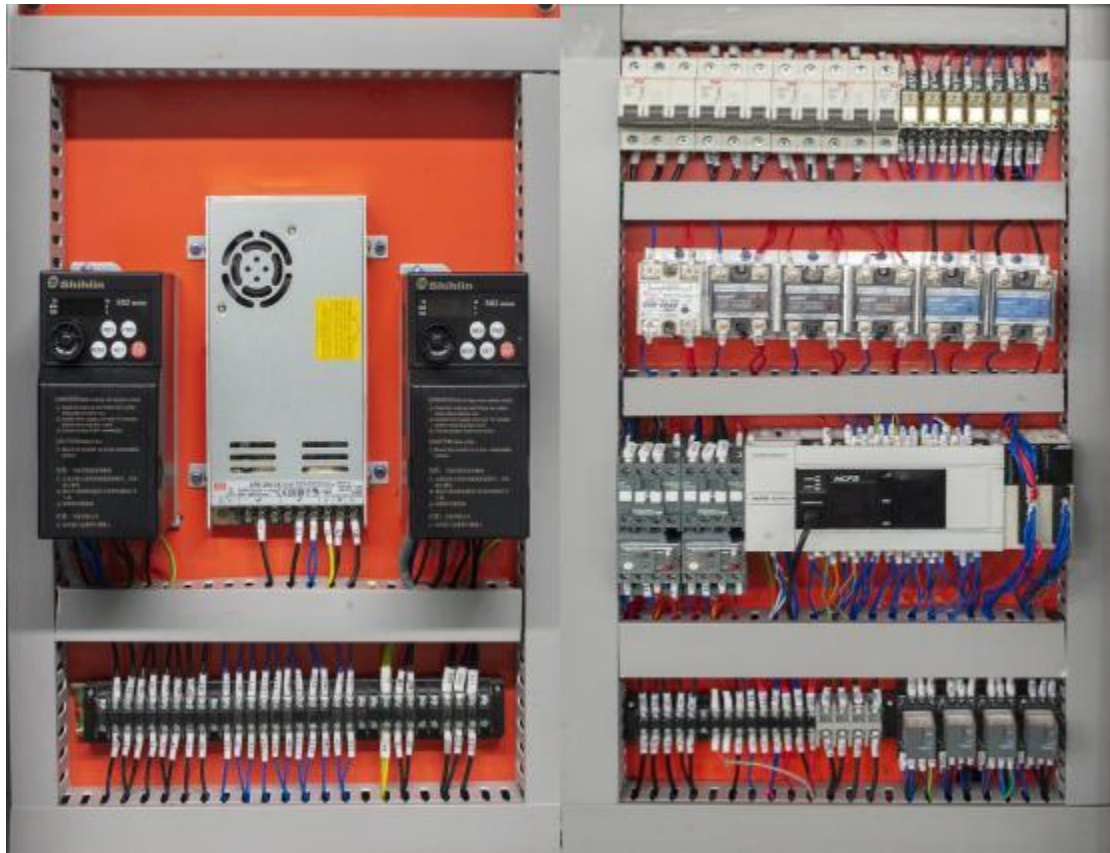
## **6, Intelligent front gauge flush paper section**



**The front gauge flush section adopts PLC-controlled servo system for precise digital positioning of the front gauge position, and the man-machine interface can store orders and adjust them digitally with one key, ensuring short order change time and high efficiency.**



## 7, Electrical Department



**The electrical department adopts PLC system control, and the electrical control components adopt international famous brands to ensure the high efficiency and stability of the electrical system; the human-machine dialogue operation interface, automatic display of fault diagnosis, digital operation and adjustment are simple and convenient.**





# MAIN PARTS BRAND AND PLACE

| Configuration Sheet                  |                  |                            |
|--------------------------------------|------------------|----------------------------|
| 名称<br>Name                           | 品牌<br>Brand      | 产地<br>Place                |
| PLC                                  | Samkoon (显控)     | 台湾 Taiwan                  |
| 人机界面 Screen                          | Samkoon (显控)     | 台湾 Taiwan                  |
| 低压电器<br>Low voltage appliances       | 施耐德<br>Schneider | 法国 FRANCE                  |
| 滚珠丝杠<br>Ball Screws                  | TBI              | 台湾 Taiwan                  |
| 变频器<br>Frequency converter           | 士林 SHIHLIN       | 台湾 Taiwan                  |
| 伺服电机<br>Servo Motor                  | 中创天勤 tianqian    | 北京 Beijing/CHINA           |
| 主电机<br>Main Motor                    | 猛牛 Mengniu       | 衡水 Hengshui/<br>CHINA      |
| 减速电机<br>Speed Reducing Motor         | 万鑫 Wangxin       | 台湾 Taiwan                  |
| 传感器 Sensor                           | 欧姆龙 Omron        | 日本 Japan                   |
| 吸风风泵                                 | 恒力 Hengli        | 浙江 zhejiang                |
| 关键部件轴承<br>Key component bearings     | NSK              | 日本 Japan                   |
| 普通部件轴承<br>General component bearings | HRB/人本           | 哈尔滨 Harbin/ 浙江<br>zhejiang |



**Bank Information**

**Bank Name: BANK OF CHINA ,YUTIAN BRANCH**

**Bank Address: NO.58 Wuzhong East Street, Yutian County, Tangshan City**

**SWIFT CODE: BKCHCNBJ23H**

**CNAPS NO: 104124900016**

**Beneficiary Name: Tangshan Eichler Trading Co.,ltd**

**Matoushan Industrial Park , North of Yutian Town , Yutian County ,  
Tangshan City , Hebei Province , China**

**Account Number: 100804188207**

**Tangshan Eichler Trading Co.,ltd**

**Address: Matoushan Industrial Park , North of Yutian Town , Yutian County , Tangshan City , Hebei  
Province . China .**

**Website: [www.cneichler.com](http://www.cneichler.com)**

**Tel: 15097556527 , 18632539399**

**Whatsapp: 18632539399 , Wechat: 15097556527 , Skype: supplymachine QQ:519946479**

**Email: [salesbenlee@vip.163.com](mailto:salesbenlee@vip.163.com) , [eichler@vip.163.com](mailto:eichler@vip.163.com)**

**[eichlermachine@gmail.com](mailto:eichlermachine@gmail.com)**